

ColorQ DW

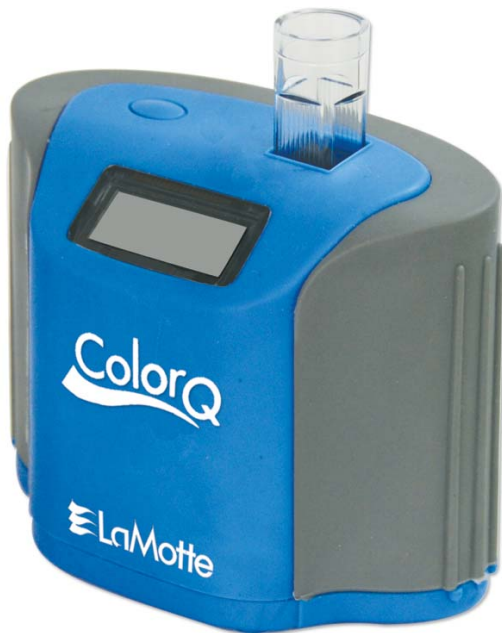
Order Code 2059

ColorQ Photometer for Drinking Water

For software Version 2.00 or higher

To insure proper testing results.

- Insert tubes into ColorQ with line and arrow facing forward.
- Brush and rinse all tubes promptly after use.
- Rinse tablet crusher between test factors.
- Allow tubes to dry before returning to case.
- Replace reagent caps securely.
- Use only LaMotte replacement reagents.
- If unit should auto-off during testing rinse and fill one tube to Blank and return to testing.
- To skip test in the sequence press button to advance past that test factor.
- To turn meter off at any time, press and hold the button until "off" is displayed.



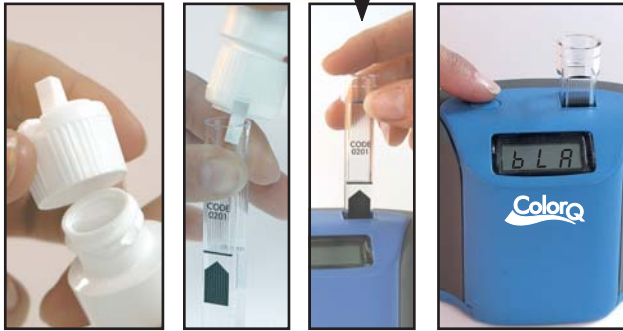
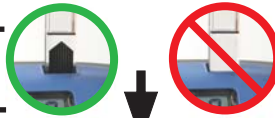
WARNING! This set contains chemicals that may be harmful if misused. Read cautions on individual containers carefully. Not to be used by children except under adult supervision.



PO Box 329 • Chestertown • Maryland • 21620 • USA
800-344-3100 • 410-778-3100 • 410-778-6394 www.lamotte.com

BLANK (CALIBRATION)

1 *blA*



1. Fill sample bottle with water sample. Replace cap.
2. Fill clean tube to the 5mL line with water sample.
3. Insert tube into ColorQ as shown.
4. Press button to turn meter on. When “blA” appears press button to “Blank” the meter, and go to pH. Remove tube.

PH

ColorQ Range: 4.0-9.0

2 *pH*

pH - Code 7059-E



1. Add 5 drops **Wide Range pH Reagent** to the same tube.
2. Cap. Invert 3 times to mix. Insert tube into ColorQ.
3. Press button to read “pH” pH. Remove tube.

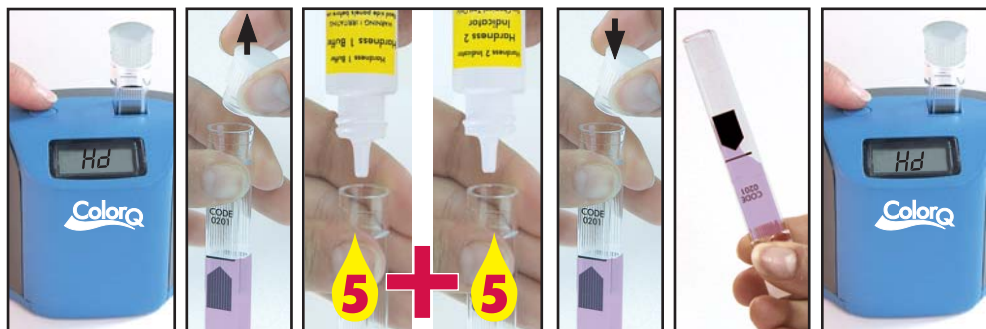
* Reagent is a potential health hazard. Read MSDS at www.lamotte.com or see MSDS CD.



3 Hd

*Hardness 1 Buffer: Code 7045-G

*Hardness 2 Indicator: Code 7046-G



1. Press button to go to "Hd" Hardness.
2. Fill a clean tube to the 5 mL line with water sample.
3. Add 5 drops **Hardness 1 Buffer** and **Hardness 2 Indicator** to same tube.
4. Cap. Invert 3 times to mix. Insert tube into ColorQ.
5. Press button to read "Hd" Hardness in gpg. Remove tube.

DILUTION

Samples with hardness concentrations above 41 gpg must be diluted. The meter will display "Hi".

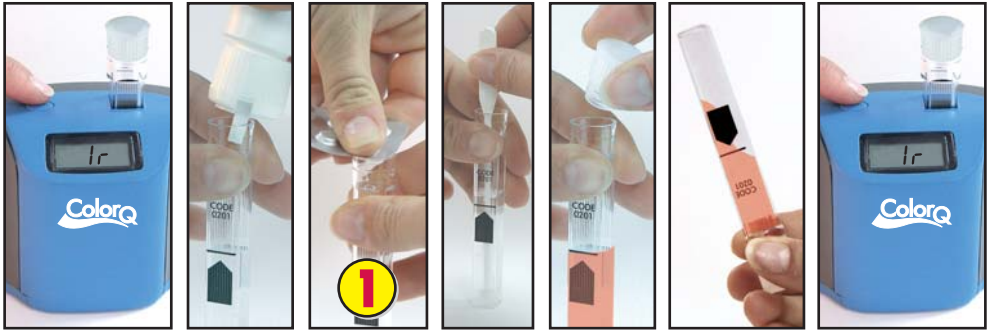
1. Use the 1 mL pipet to add 2 mL water sample to a clean test tube.
2. Dilute to the 5 mL line with distilled or deionized water. Cap and mix.
3. Blank with the diluted sample from Step 2. Follow the test procedure with the diluted sample from Step 2. Multiply the displayed result by 2.5.

* Reagent is a potential health hazard. Read MSDS at www.lamotte.com or see MSDS CD.



4 *Ir*

*Ir - Code 3725A-H



1. Press button to go to “Ir” Iron.
2. Fill a clean tube to the 5 mL line with water sample.
3. Add 1 **IRON** Tablet. Crush with tablet crusher.
4. Cap. Invert 3 times to mix. Tablet will not dissolve completely. Insert tube into Color Q.
5. Press button to read “Ir” Iron in ppm. Remove tube.

DILUTION

Samples with iron concentrations above 3 ppm must be diluted. The meter will display “Hi”.

1. Use the 1 mL pipet to add 1 mL water sample to a test tube.
 2. Dilute to the 5 mL line with distilled or deionized water. Cap and mix.
 3. Blank with the diluted sample from Step 2. Follow the test procedure with the diluted sample from Step 2. Multiply the displayed result by 5.
-

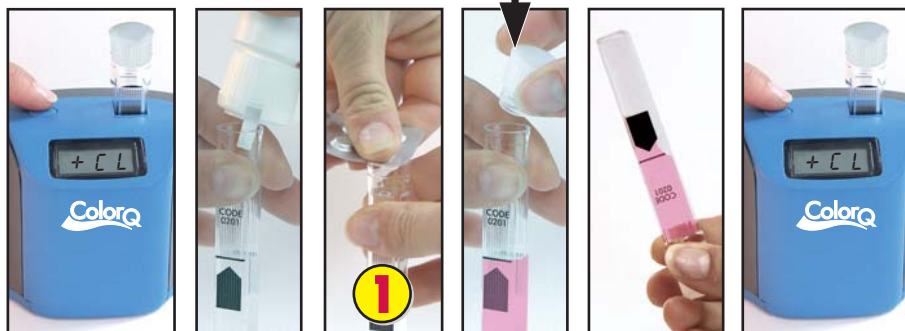
* Reagent is a potential health hazard. Read MSDS at www.lamotte.com or see MSDS CD



5 FCL/tCL

*DPD 1 - Code 6903A-H

*DPD 3 - Code 6197A-H



Free Chlorine and Total Chlorine

1. Press button to go to "FCL" Free Chlorine.
2. Fill a clean tube to the 5 mL line with water sample.
3. Add 1 **DPD 1** Tablet. Cap. Shake for TEN seconds. Invert slowly 5 times.
4. Press button to read "FCL" Free Chlorine in ppm. Remove tube.

1. Press button to go to "tCL" Total Chlorine.
2. Remove cap from reacted FCL tube.
3. Add 1 **DPD 3** Tablet. Cap. Shake for TEN seconds. Invert slowly 5 times.
4. Insert tube into ColorQ.
5. Press button to read "tCL" Total Chlorine in ppm. Remove tube.

Total Chlorine Only

1. Press button past "FCL" Free Chlorine to go to "tCL" Total Chlorine.
2. Fill a clean tube to the 5 mL line with water sample.
3. Add 1 **DPD 1** Tablet. Cap. Shake for TEN seconds. Invert slowly 5 times.
4. Remove cap. Add 1 **DPD 3** Tablet. Cap. Shake for TEN seconds. Invert slowly 5 times.
6. Insert tube into ColorQ.
7. Press button to read "tCL" Total Chlorine in ppm. Remove tube.

* Reagent is a potential health hazard. Read MSDS at www.lamotte.com or see MSDS CD.

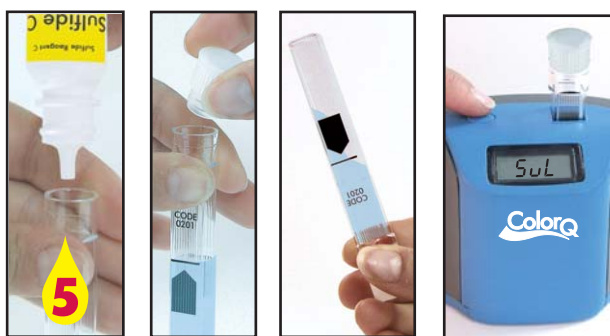
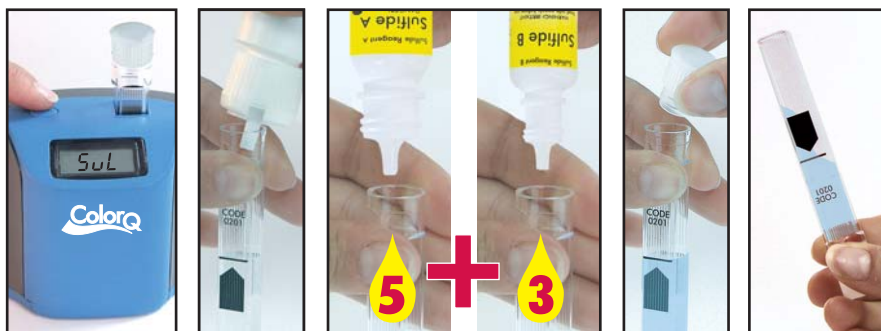


6 SuL

* Sulfide Reagent A: Code V-4458LWT-G

* Sulfide Reagent B: Code V-4459-E

* Sulfide Reagent C: Code 4460LWT-G



1. Press button to go to "SuL" Sulfide.
2. Fill a clean tube to the 5 mL line with water sample.
3. Add 5 drops of **SULFIDE REAGENT A**.
4. Add 3 drops of **SULFIDE REAGENT B**.
5. Cap and invert 3 times to mix. Allow tube to sit for ONE minute.
6. Add 5 drops of **SULFIDE REAGENT C**.
7. Cap. Invert 3 times to mix. Insert tube into ColorQ.
8. Press button to read "SuL" Sulfide in ppm. Remove tube.

DILUTION

Samples with sulfide concentrations above 3 ppm must be diluted. The meter will display "Hi".

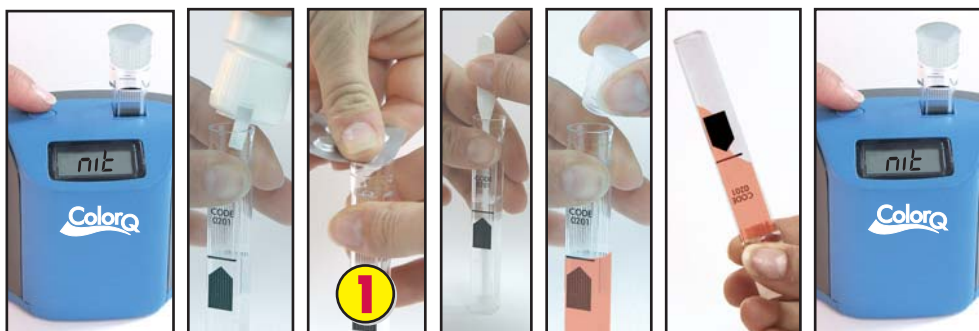
1. Use the 1 mL pipet to add 1 mL water sample to a test tube.
2. Dilute to the 5 mL line with distilled or deionized water. Cap and mix.
3. Blank with the diluted sample from Step 2. Follow the test procedure with the diluted sample from Step 2. Multiply the displayed result by 5.

* Reagent is a potential health hazard. Read MSDS at www.lamotte.com or see MSDS CD.



7 nit

*Nitra - Code 3881A-H



1. Press button to go to “nit” Nitrate.
2. Fill a clean tube to the 5 mL line with water sample.
3. Add 1 **NITRATE** Tablet. Crush with tablet crusher.
4. Cap. Invert 30 times per minute for TWO minutes.
5. Wait FIVE minutes. Insert tube into Color Q.
6. Press button to read “nit” Nitrate-Nitrogen in ppm. Remove tube.

* Reagent is a potential health hazard. Read MSDS at www.lamotte.com or see MSDS CD



Testing Tips

- Read all instructions before testing.
- If not testing all tests in the sequence, follow blanking procedure and then press button until desired test factor is shown. Follow test procedure.
- In one complete inversion, the tube will be turned cap down and then right side up. The air bubble will move slowly to the bottom of the tube and back again to the cap end.
- If small bubbles form after adding reagents, tap bottom of tube sharply once or twice to dislodge bubbles. Bubbles will interfere with the test results.
- Be sure the outside of the tubes are dry before putting them into the ColorQ. This is best accomplished by dispensing the water sample from the sample bottle.

Low pH Low pH levels can significantly lower the hardness results.

Error Messages

Er 3 = Insufficient light is reaching the detector. Sample may be too dark, or tube may be in sideways. Turn off meter and retest.

Er 7 = The blank was not properly set. Turn off meter and retest blank making sure the black arrow on the tube is facing forward, toward the user (not left or right).

SUN = Extremely bright sunlight is penetrating the chamber. Turn your back to the sun to shade the meter from bright sunlight.

Lo = Result is below the effective measuring range for the system (e.g. < 4.0 pH for Code 7059 reagent.)

Hi = Result is above the effective measuring range for the system (e.g. > 9.0 pH for Code 7059 reagent.)

bAt = Battery is low.

Maintenance

- Clean ColorQ optics with a damp cotton swab. Avoid abrasive cleaners that can damage plastic.
- Replace stained or scratched tubes (0201).

Battery Replacement

Use a small Phillips head screwdriver to remove all 5 screws in the base. Gently pull the battery holder from the inside and replace TWO AA style batteries. Replace screws securely but do not over-tighten screws which can tear the rubber base.

